

CDKN1C Antibody
Mouse Monoclonal Antibody (Mab)
Catalog # AM2072B**Specification**

CDKN1C Antibody - Product Information

Application	WB,E
Primary Accession	P49918
Other Accession	NP_000067.1
Reactivity	Human
Host	Mouse
Clonality	Monoclonal
Isotype	IgM
Calculated MW	32177
Antigen Region	34-64

CDKN1C Antibody - Additional Information**Gene ID** 1028**Other Names**

Cyclin-dependent kinase inhibitor 1C, Cyclin-dependent kinase inhibitor p57, p57Kip2, CDKN1C, KIP2

Target/Specificity

This CDKN1C antibody is generated from mice immunized with a KLH conjugated synthetic peptide between 34-64 amino acids from human CDKN1C.

Dilution

WB~~1:500~1000

E~~Use at an assay dependent concentration.

Format

Purified monoclonal antibody supplied in PBS with 0.09% (W/V) sodium azide. This antibody is prepared by Euglobin precipitation followed by dialysis against PBS.

Storage

Maintain refrigerated at 2-8°C for up to 2 weeks. For long term storage store at -20°C in small aliquots to prevent freeze-thaw cycles.

Precautions

CDKN1C Antibody is for research use only and not for use in diagnostic or therapeutic procedures.

CDKN1C Antibody - Protein Information**Name** CDKN1C**Synonyms** KIP2

Function Potent tight-binding inhibitor of several G1 cyclin/CDK complexes (cyclin E-CDK2, cyclin D2-CDK4, and cyclin A-CDK2) and, to lesser extent, of the mitotic cyclin B-CDC2. Negative regulator of cell proliferation. May play a role in maintenance of the non-proliferative state throughout life.

Cellular Location

Nucleus.

Tissue Location

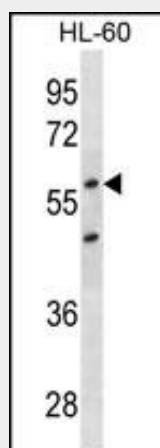
Expressed in the heart, brain, lung, skeletal muscle, kidney, pancreas and testis. Expressed in the eye. High levels are seen in the placenta while low levels are seen in the liver

CDKN1C Antibody - Protocols

Provided below are standard protocols that you may find useful for product applications.

- [Western Blot](#)
- [Blocking Peptides](#)
- [Dot Blot](#)
- [Immunohistochemistry](#)
- [Immunofluorescence](#)
- [Immunoprecipitation](#)
- [Flow Cytometry](#)
- [Cell Culture](#)

CDKN1C Antibody - Images



CDKN1C Antibody (Cat. #AM2072b) western blot analysis in HL-60 cell line lysates (35µg/lane). This demonstrates the CDKN1C antibody detected the CDKN1C protein (arrow).

CDKN1C Antibody - Background

This gene is imprinted, with preferential expression of the maternal allele. The encoded protein is a tight-binding, strong inhibitor of several G1 cyclin/Cdk complexes and a negative regulator of cell proliferation. Mutations in this gene are implicated in sporadic cancers and Beckwith-Wiedemann syndrome, suggesting that this gene is a tumor suppressor candidate. Three transcript variants encoding two different isoforms have been found for this gene.

CDKN1C Antibody - References

O'Seaghdha, C.M., et al. Hum. Mol. Genet. 19(21):4296-4303(2010)
Madhavan, J., et al. Ophthalmic Genet. 31(3):141-146(2010)
Romanelli, V., et al. Am. J. Med. Genet. A 152A (6), 1390-1397 (2010) :
Hoffner, L., et al. J Reprod Med 55 (5-6), 219-228 (2010) :
Jugessur, A., et al. PLoS ONE 5 (7), E11493 (2010) :